

CSI ChromaStain Color Selection Guide

CSI ChromaStain

CSI ChromaStain produces a rich and variegated finish unique to each surface. Instead of covering up the concrete like a paint or coating, stains infuse color into the surface while also showcasing the character of the substrate. The translucent effects and the broad drifts in color—considered hallmarks of the stains—give surfaces the appearance of a timeworn finish.



ChromaStain Applied to Gray Concrete



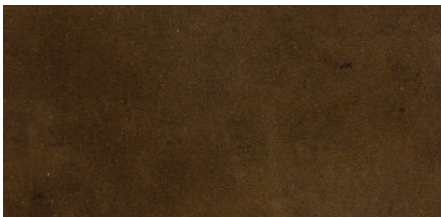
Bluegrass



Jade



Neptune



Kodiak



Cinnamon



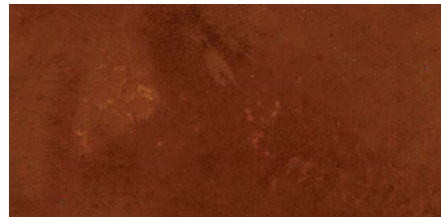
Buckwheat



Blackfoot



Ember



Adobe



Chocolate

PRODUCT BENEFITS:

- CSI ChromaStain is a combination of metallic salts in water-based solutions that are slightly acidic. By reacting with the free lime available after concrete has fully cured, stains penetrate and etch new or existing concrete that is free from sealers, paints, and other forms of resists. Color remains in the concrete pores which means color won't chip, crack, fade or peel.
- CSI ChromaStain does not "cover up" the concrete surface but works in conjunction with the finish character of the substrate. A variegated finish and beautiful patina, an "old world" surface effect, similar to the patination of bronze and natural oxidation of copper is produced. The broad drifts of color and mottled surface effects are considered architectural hallmarks of this concrete coloring method. CSI ChromaStain is reactive by nature and contains no pigments.
- Available in ten standard colors, CSI ChromaStain creates expanses of rich color and marbled hues from plain, gray concrete.
- Inside or outside, CSI ChromaStain can be applied to walkways, driveways, pool decks, patios, plazas, street pavements and more.
- To expand the color palette on new projects, CSI ChromaStain can be used over all CSI Color Hardener, CSI Microtopping INT, CSI Microtopping HD, CSI Stampable Overlay and CSI Integral Color colors to further enhance the tone of colored concrete. To produce enhanced and richer effects, white-based surfaces can be used.
- Stain can also be applied over another stain to expand color possibilities providing a variety of artistic and graphic effects. Utilize an experienced contractor or artisan for installations.

PACKAGE SIZES:

- CSI ChromaStain is available in 1-and 5-gallon units.

COVERAGE RATES AND DRYING TIMES:

Coverage rates may vary depending on the texture, porosity and condition of the concrete, application method, and other local conditions.

- *Rough or Broom Finish:* Material usage is 200-400 sq. ft. per gallon/coat.
 - *Hard Troweled or Polished Concrete:* Material usage is approx. 400 sq. ft. per gallon/coat.
- Drying times** below will vary depending on surface permeability, temperature, humidity and local conditions. When drying, do not cover surface with anything non-permeable for a minimum of 24 hours.
- Typical dry times are at 70 °F and 50% relative humidity.
 - Allow a minimum of five hours dry time for the first coat.
 - Allow 24 hours dry time prior to applying protective sealer.
 - Hard-troweled surfaces need a minimum of 10 hours dry time for the first coat, 18 hours dry time being optimal.
 - Adobe and Blackfoot colors need a min. of 10 hours dry time.
 - Neptune, Bluegrass and Jade colors need 5 hours dry time.

• The colors on this color card approximate, as closely as possible, the appearance obtained in natural light. Variables, including job conditions and finishing techniques, effect the final color. If color accuracy is critical, a pre-construction sample utilizing actual job site materials and construction methods is required. Information contained in this brochure is to the best of our knowledge, true and accurate but all recommendations or suggestions are made without guarantee. Since the use of the products is beyond our control, ChemSystems, Inc. disclaims any liability incurred in connection with the use of our products and any information contained herein.



CHEMSYSTEMS
INC.